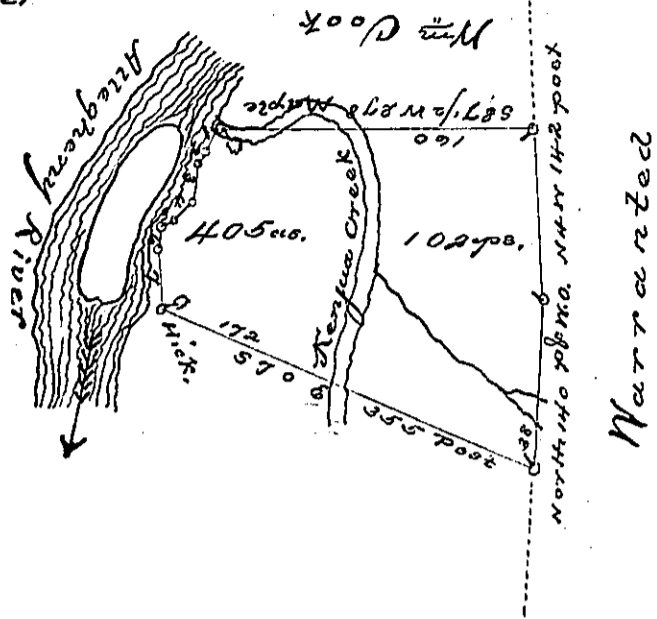


Courses and distances down river from Maple corner

- N^o 1 S. 26 N. 28
- " 2 S. 41 N. 10
- " 3 S. 7 N. 31
- " 4 S. 46 N. 23
- " 5 S. 57 N. 12
- " 6 S. 19 N. 20
- " 7 S. 12 1/4 E. 44 1/2 to Hickory



Draft of a tract of land situate in Conewango Township Warren County, east of, and adjoining the Allegheny river on Kenjua creek; containing four hundred and five acres and one hundred and two perches and allowance, adjoining land of William Cook and others, - Surveyed 11th February 1819, in pursuance of a warrant granted to Hugh White and Robert McKee, dated 9th June 1785, N^o 574

John Irwin D.S.

Jacob Spangler
Surveyor General Pa.

IN TESTIMONY that the above is a copy of the original remaining on file in the Department of Internal Affairs of Pennsylvania, made conformably to an Act of Assembly approved the 16th day of February, 1833, I have hereunto set my Hand and caused the Seal of said Department to be affixed at Harrisburg, this second day of March, 1897.

James W. Foster
Secretary of Internal Affairs.